



# GAT MONTHLY MEMBERSHIP PROGRESS REPORT

Results as of: 4/30/2024

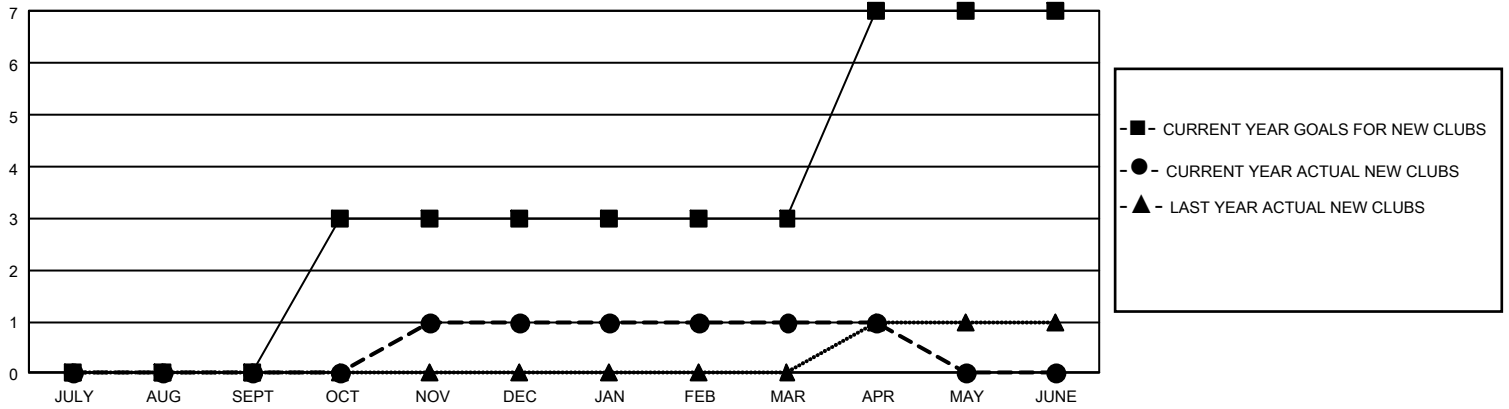
## GMT Constitutional Area 7, Group B

REPORT DOES NOT INCLUDE CLUBS IN UNDISTRICTED AREAS.

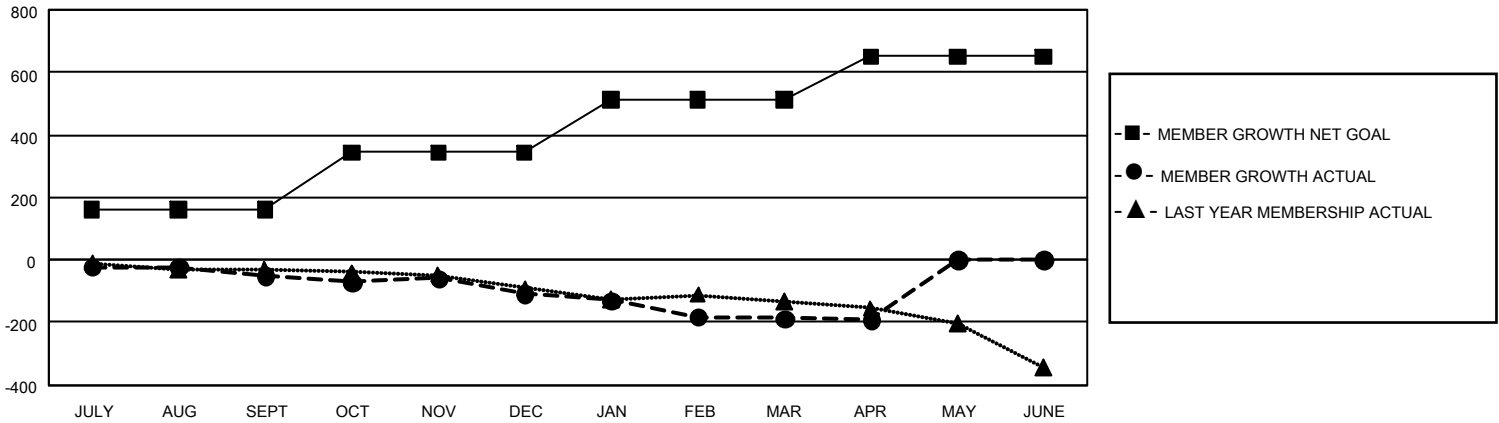
Clubs			
RESULTS FOR 2023-2024			
QUARTER	NEW CLUB GOAL	NEW CLUBS	DROPPED CLUBS
JULY/AUG/SEPT	0	0	3
OCT/NOV/DEC	9	1	2
JAN/FEB/MAR	0	0	0
APR/MAY/JUNE	12	0	0

Members			
RESULTS FOR 2023-2024			
QUARTER	MEMBER GROWTH NET GOAL	MEMBER GROWTH ACTUAL	DROPPED MEMBERS ACTUAL (including transfers)
JULY/AUG/SEPT	162	183	200
OCT/NOV/DEC	182	185	227
JAN/FEB/MAR	168	102	167
APR/MAY/JUNE	139	56	56

GOALS AND ACTUAL NEW CLUBS CUMULATIVE



GOALS AND ACTUAL MEMBERS CUMULATIVE



<b>DROPPED CLUBS: 5</b>	180 CLUBS OF 300 ADDED 1 OR MORE NEW MEMBERS	<b><u>GENDER DISTRIBUTION</u></b>	
		MALE 5,151 (66.82%) FEMALE 2,557 (33.17%) NON BINARY 1 (0.01%) PREFER NOT TO ANSWER 0 (0.00%)	
<b><u>DROPPED MEMBERS</u></b>		<a href="#">CLICK HERE FOR CUMULATIVE MEMBERSHIP DATA</a>	TOTAL FAMILY UNIT MEMBERS 683
DECEASED 92 CLUB CANCELLED 0 OTHER 558 <b>TOTAL 650</b>			FAMILY MEMBERS PAYING HALF DUES 344